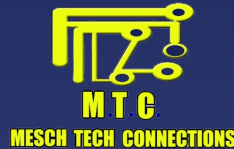




Mesch Tech Connections

Conna-Lee Jones | Shanae Montaque | Thorn Lewars
Oroy Campbell | Erwin Rowe





THE PROBLEM



PROBLEM STATEMENT

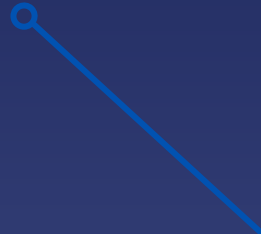
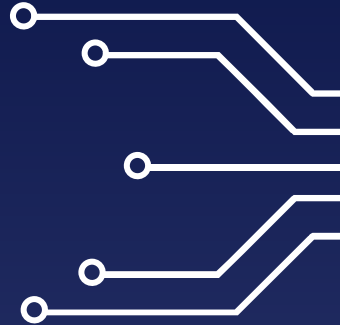
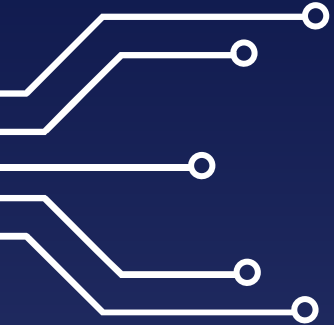
In Jamaica, for the past 2 years alone the need for reliable internet access has been at an all time high, according to Statista (July, 2019), more than 55% of the Jamaican population accessed the internet, despite this, there are persons who are still without this fundamental resource especially during this period where the digital and physical worlds are connected more than ever.





“It’s worrying to think more than half the world’s population lacks internet access and therefore lacks an equal opportunity to improve their lives.”

—**RICHARD BRANSON**



UP CLOSE AND PERSONAL

Education

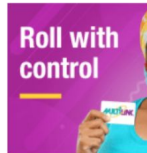
- Levels of engagement in distance learning during school closure/remote teaching varied by age group, with children in the pre/basic school age group having the lowest engagement (75%), followed by high school aged students (83%) and then primary/preparatory (90%).
- The main reasons for children at pre/basic school or primary/preparatory level not engaging in distance learning was because they lacked the facilities. At high school age, the main reason was not having a suitable device (62%) and lacking access to the Internet (18%).

Online learning will be relevant even after COVID passes – Williams

Loop News | October 18, 2020 08:25 AM ET



“We know that there are many challenges facing students and parents. We know that not everyone has proper connectivity and even in cases where they do, they might not have the money for the data plans and so on,” Williams said.

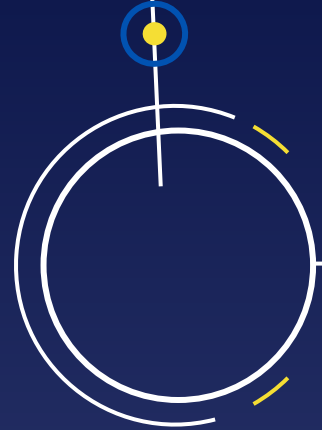


Mr. Malabver said his school is contemplating having some of the students repeat the year.

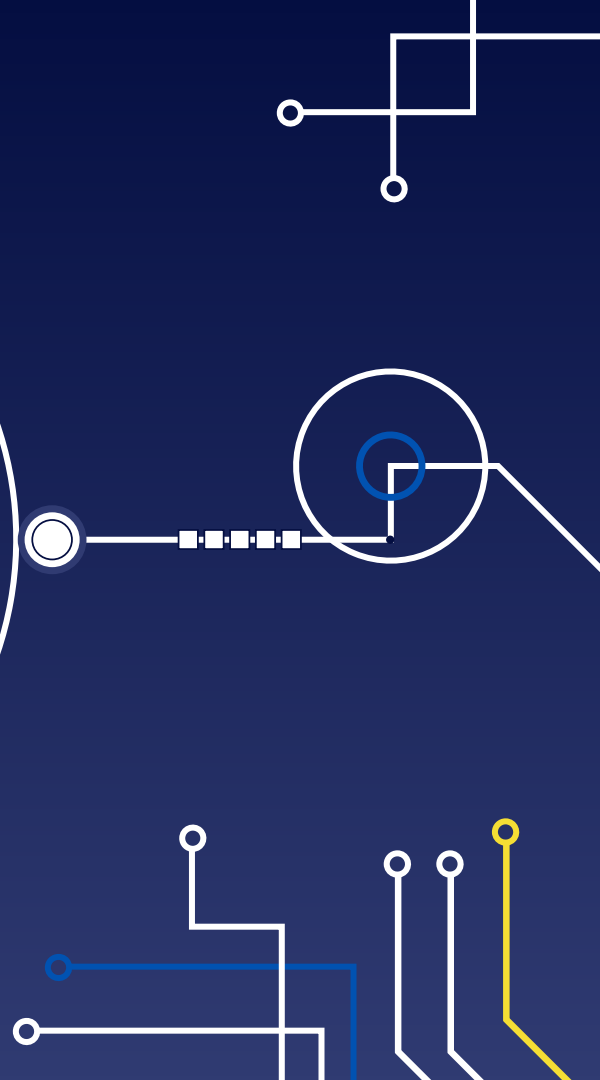
“From my perspective, I am back down to only being in conduct with roughly about 40 per cent of my students in terms of online classes. We do try to engage them otherwise but it is dire,” he revealed.

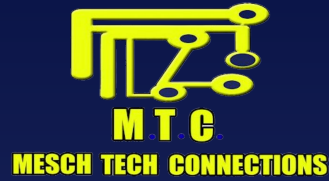
But Mr. Malabver thinks that figure is conservative and could be as high as 170,000.

The ministry has put the number at 120,000.



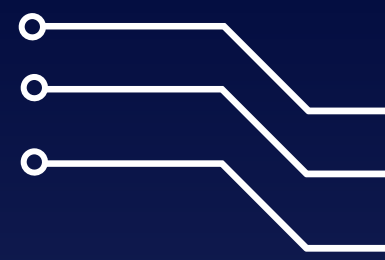
**WE SEE
YOU WE
HEAR YOU**





MESCH TECH CONNECTIONS





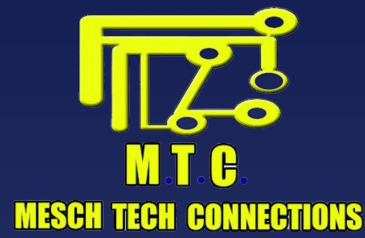
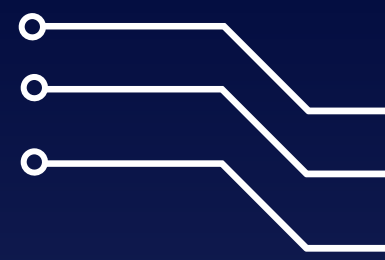
MTC
MESCH TECH CONNECTIONS



Internet accessibility for
EVERY Jamaican.

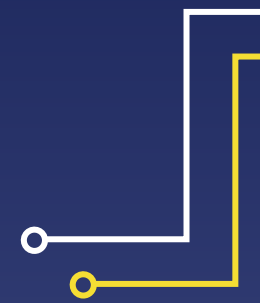


VISION



MISSION

To provide fast, reliable and affordable internet connection to the everyday Jamaican through mesh technology and Internet of Things (IoT).

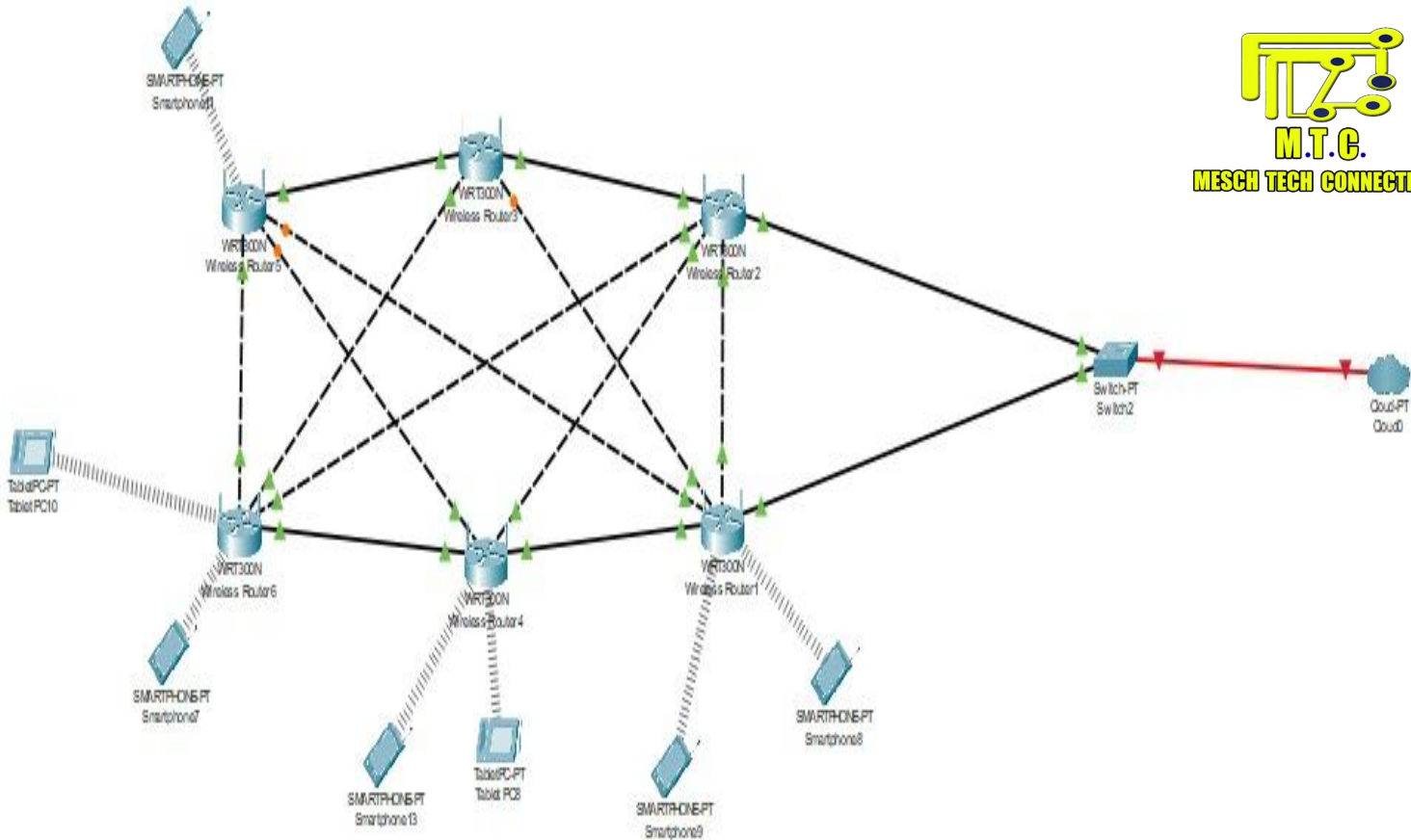




SOLUTION

A prepaid local area network (LAN) connection to supply existing and new rural community developments through a **Mesh Network Connection**, thus enabling persons who were unable to receive internet due to their remote location to now do so. Our network routers employ a specific mesh framework and utilizes one of our most ubiquitous renewable resources-solar energy.





CUSTOMER

Families living in Rural Community Developments in Jamaica



Who is that really?

- Persons having a monthly income of 96,000- 150,000 JMD per month
- Have children attending school
- Working from home
- Males and Females ages 18-55
- Basically, your everyday Jamaican

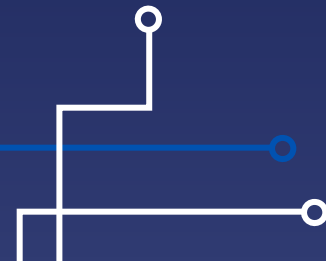
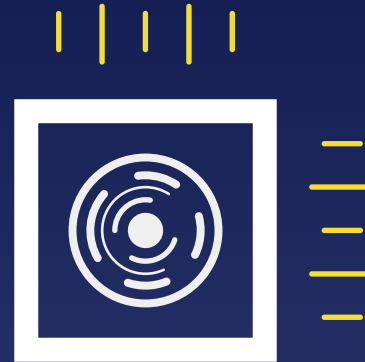
COLLABORATORS/PARTNERS



Movers and Shakers



- Internet Service Providers
- GPS Providers





VALUE ADDED

PASSION/EMPATHY

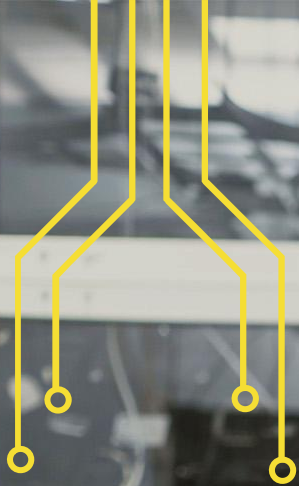
SAFE & SECURE

ECO- FRIENDLY

SOCIALLY DISTANT NOT SOCIALLY
DISCONNECTED



AFFORDABLE



M.T.C.

MESCH TECH CONNECTIONS

Web with Mesch; Wifi is Nexxt

PROOF OF CONCEPT



QUESTIONNAIRES

Issued to members of community to gauge interest and commitment to service.

FOCUS GROUPS

Consult with professionals and experts in the field on the feasibility and practicality.

STARTUP COSTS

Description	Quantity	Unit	Unit Cost/ Rate (USD)	Total / Amount
Long range wireless outdoor CPE Router/Repeater(Access point) (Range 12km @ 300MB/sec)	15	sum	\$57.00	\$855.00
Load Balancer(software license)	1	year	\$1,377.00	\$1,377.00
Gateway Switches	15	sum	\$59.00	\$885.00
mini solar panels and battery	150	sum	\$16.00	\$2,400.00
Third party contractors	1	sum	\$1,500.00	\$1,500.00
Utility Cabinet (Server Station)	1	sum	\$2,900.00	\$2,900.00
			Total	\$9,917.00
Contingency (15%) of overall cost				\$1,487.55
Grand Total			(USD)	\$11,404.55
			(JMD)	\$1,790,514.35

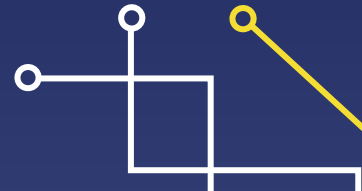
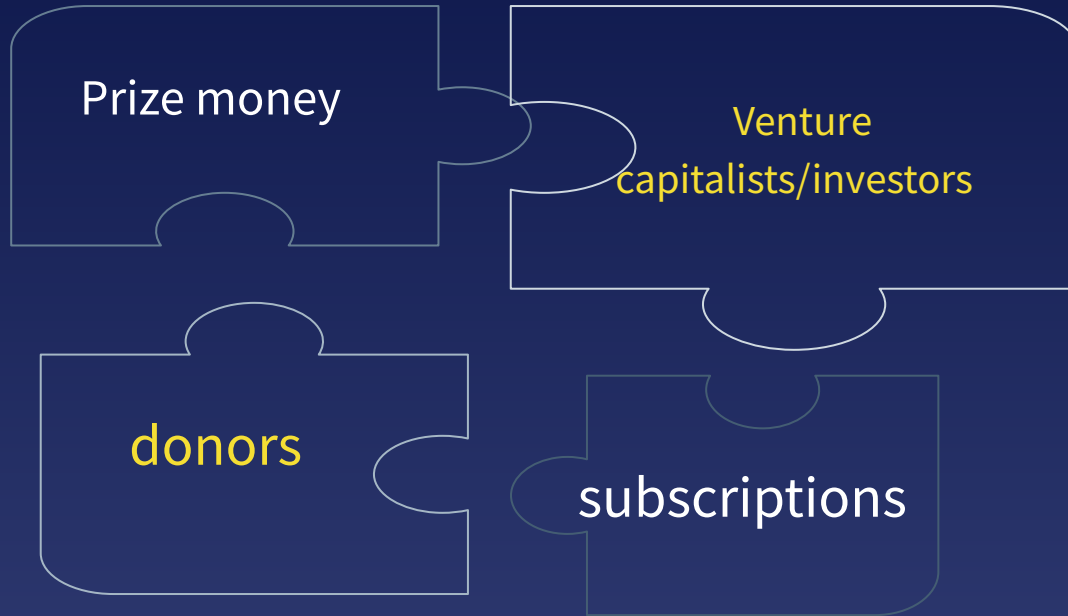
CAPEX

STARTUP COSTS

OPEX

Description	Quantity	Unit	Unit Cost/ Rate (USD)	Total / Amount
Staffing				
-Management	5	sum	\$200.00	\$1,000.00
-Accountant	1	sum	\$250.00	\$250.00
-Legal Counsel	1	sum	\$350.00	\$350.00
- Maintenance Personnel	2	persons	\$150.00	\$300.00
- Administrative	1	sum	\$150.00	\$150.00
- Marketing and Sales	2	persons	\$127.00	\$254.00
Infrastructure Costs				
Lease for Internet	2	GB	\$3,000.00	\$6,000.00
Storage Facility	1	months	\$100.00	\$100.00
Electricity	1	month	\$300.00	\$300.00
Maintenance	1	month	\$600.00	\$600.00
			Total	\$9,304.00
Grand Total			(USD)	\$9,304.00
			(JMD)	\$1,460,728.00

REVENUE STREAMS

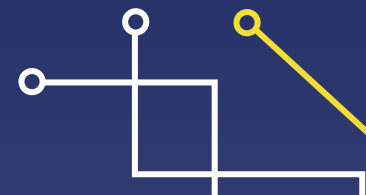




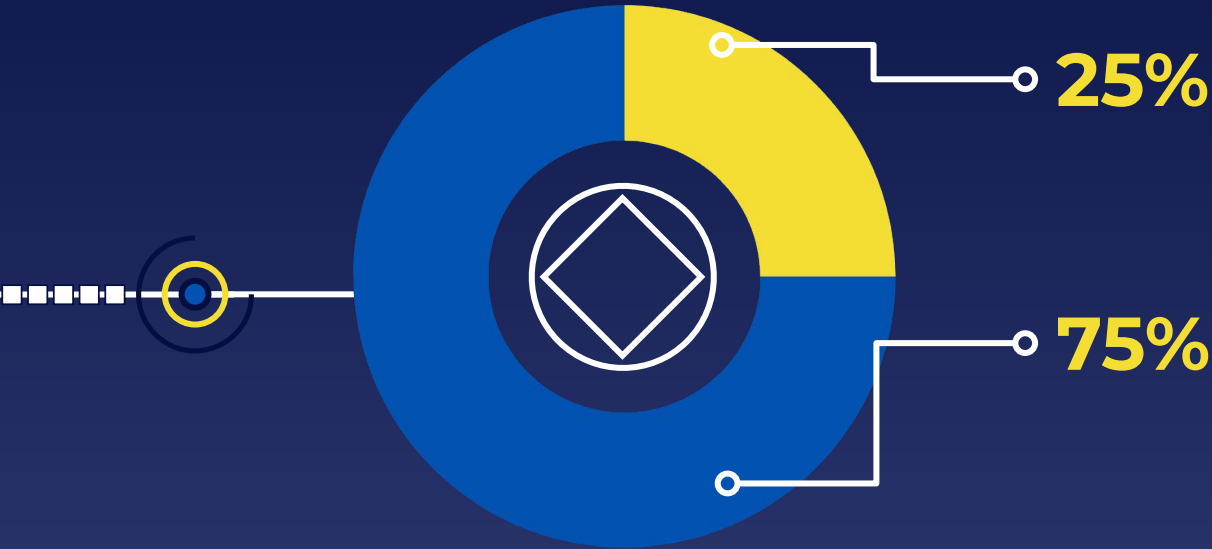
OPPORTUNITIES/RISKS

Possible Risks	Solutions
Theft	Remote programing to deactivate boxes and GPS systems
Network Security	Router Encryption softwares

Opportunities

1. Niche target audience resulting from their remote location.
 2. Eco- awakening (society's value of sustainable growth)
 3. Economic Climate and the pandemic
- 

SUSTAINABLE DEVELOPMENT GOALS



NON-RENEWABLE ENERGY

Occasional use of fossil fuels.

RENEWABLE ENERGY

Playing our part in reducing the world's carbon footprint with solar powered routers.

Goal 11: Sustainable Cities and Communities

THANKS!

CREDITS: This presentation template was created by Slidesgo, including icons by Flaticon, and infographics & images by Freepik



REFERENCES

<https://www.unicef.org/jamaica/press-releases/unicef-study-reveals-impact-covid-19-challenges-children-and-families-jamaica>

<http://radiojamaicanewsonline.com/local/number-of-students-absent-from-school-since-pandemic-likely-much-higher-than-reported-says-educator>

<https://jamaica-gleaner.com/article/news/20210505/120000-students-missing-classes-over-last-year>

<https://jamaica.loopnews.com/content/online-learning-will-be-relevant-even-after-covid-passes-williams>

<https://www.statista.com/statistics/1055489/internet-penetration-jamaica/#:~:text=In%202017%2C%20more%20than%2055.Latin%20America%20and%20the%20Caribbean.>

CONTACT*



ADDRESS

252 Marcus Garvey Drive,
Kingston 13



PHONE

(876) 989-9583



CELL PHONE

(876) 858-6399



EMAIL

meschtechpartners@gmai
l.com